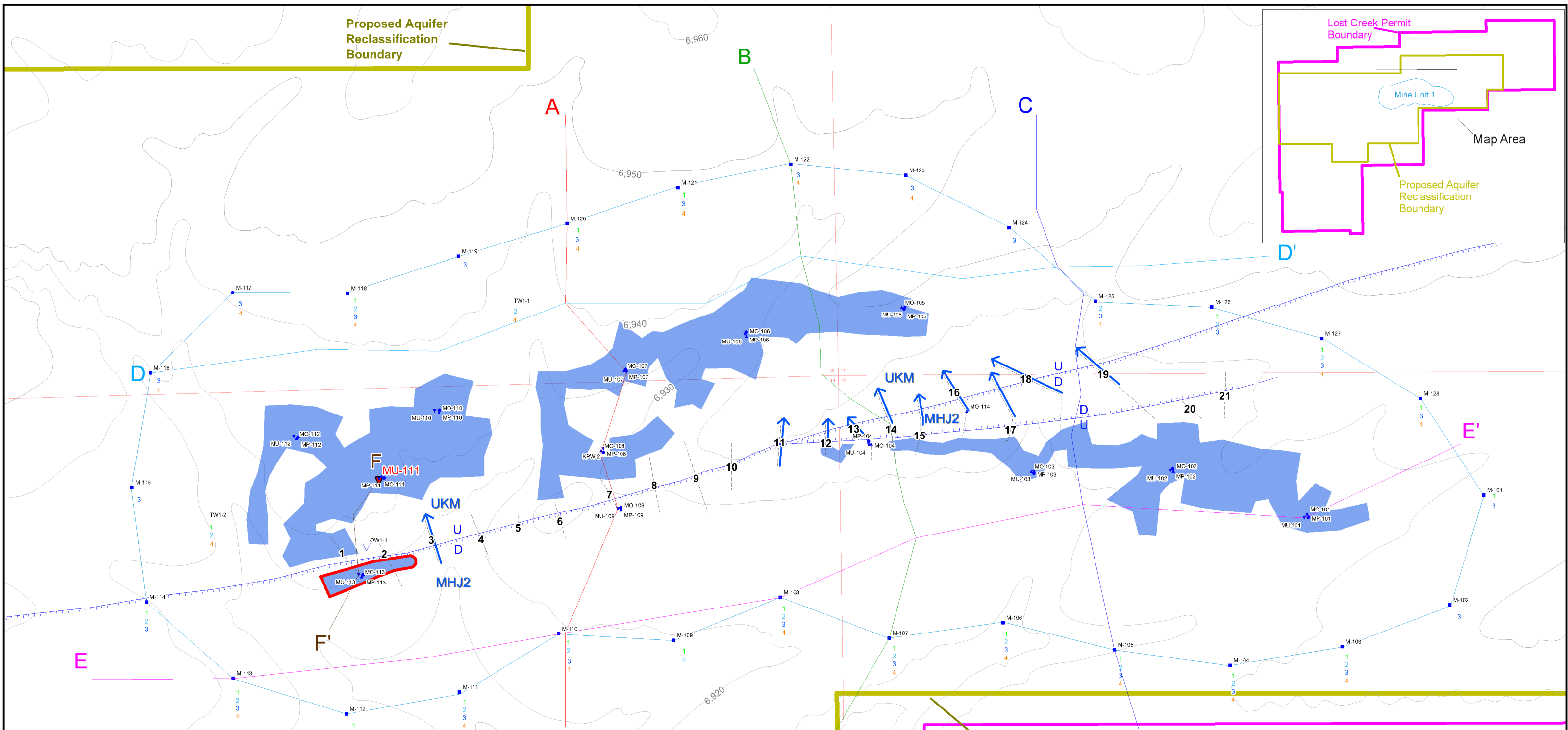
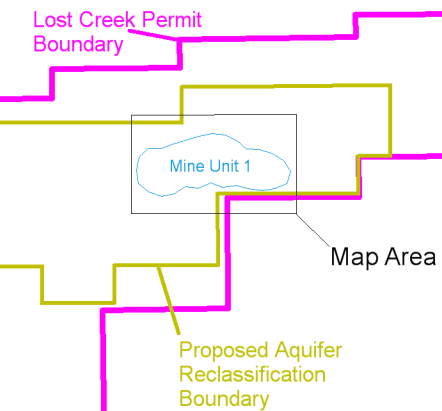


**Proposed Aquifer
Reclassification
Boundary**



LEGEND

- Perimeter Monitor Ring Wells
- ▲ Overlying Monitor Wells
- Production Zone Monitor Wells
- ▼ Underlying Monitor Wells
- HJ Trend Well
- ▽ UKM Observation Well

Perimeter Monitor Ring Well Completion Intervals:

1=UHJ 3=MHJ2
2=MHJ1 4=LHJ

- ← Lost Creek Fault associated with MU1
- ← Juxtaposition of MHJ2 to underlying UKM - arrow indicates direction of potential excursion
- Proposed MHJ2 Production Pattern Area
- Pattern areas that could have potential for excursion across fault
- ▼ Well-### Existing well that will serve as across fault monitor



Lost Creek ISR, LLC
Littleton, Colorado, USA

Figure VII-11
MHJ2 Pattern Area in Mine Unit 1
MHJ2 Sand vs UKM Sand
Lost Creek Permit Area

Issued For: WDEQ Drawn By: JKC

Issued/Revised: 22 February 2011

Drawing No: WDEQMU1AppFIGVII-11

0 400 feet

1 Inch = 400 feet