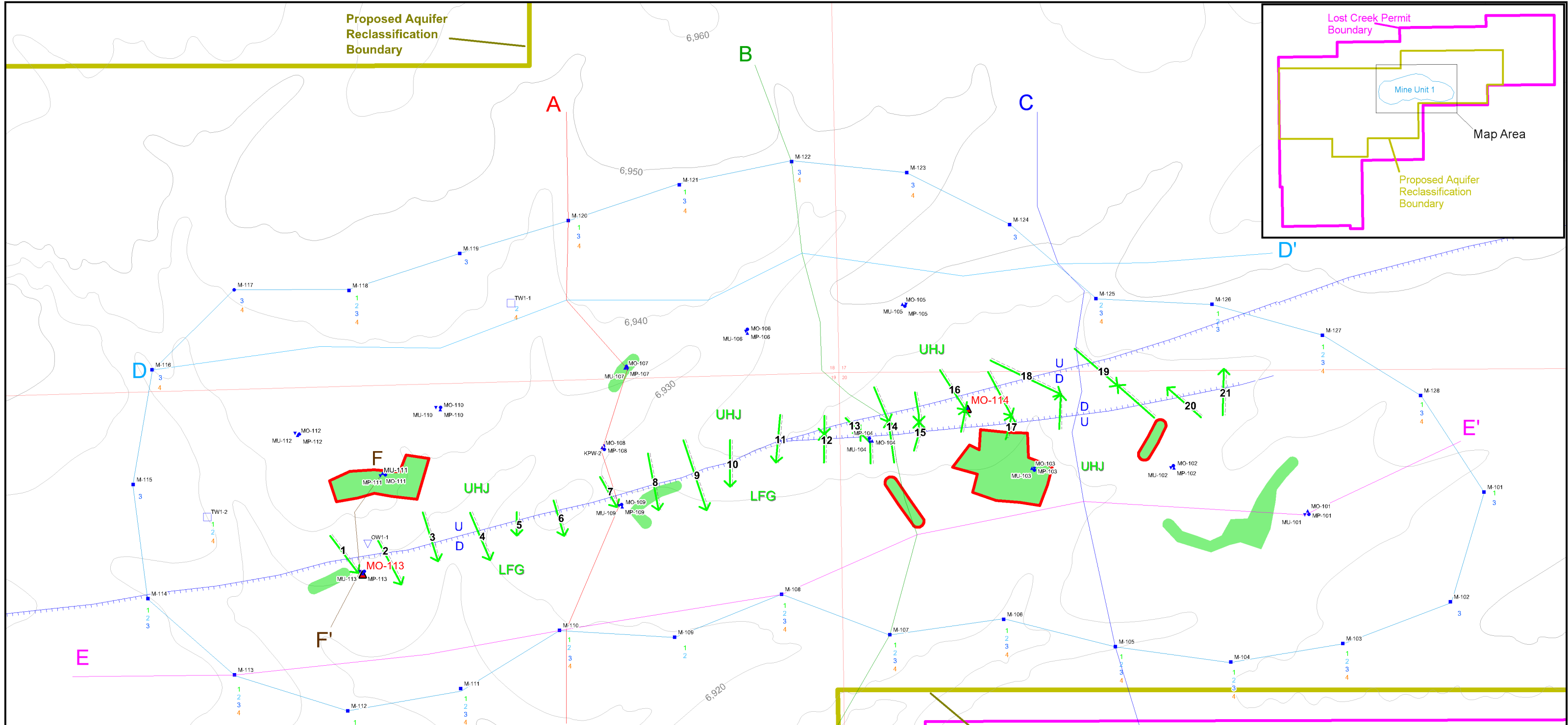
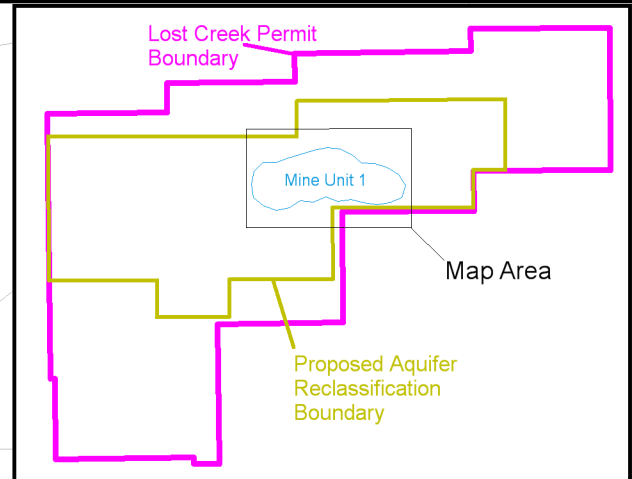


**Proposed Aquifer  
Reclassification  
Boundary**



**LEGEND**

- Perimeter Monitor Ring Wells
- ▲ Overlying Monitor Wells
- Production Zone Monitor Wells
- ▼ Underlying Monitor Wells
- HJ Trend Well
- ▽ UKM Observation Well

Perimeter Monitor Ring Well Completion Intervals:

- 1=UHJ    3=MHJ2
- 2=MHJ1    4=LHJ

- Lost Creek Fault associated with MU1
- ← Juxtaposition of UHJ to overlying LFG - arrow indicates direction of potential excursion
- Proposed UHJ Production Pattern Area
- Pattern areas that could have potential for excursion across fault
- ▲ Well-### Existing well that will serve as across fault monitor

**Proposed Aquifer  
Reclassification  
Boundary**



**Lost Creek ISR, LLC**  
Littleton, Colorado, USA

**Figure VII-8**  
UHJ Pattern Area in Mine Unit 1  
UHJ Sand vs LFG Sand  
Lost Creek Permit Area

Issued For: WDEQ Drawn By: JKC

Issued/Revised: 22 February 2011

Drawing No: WDEQMU1AppFIGVII-8

0 400 feet

1 Inch = 400 feet