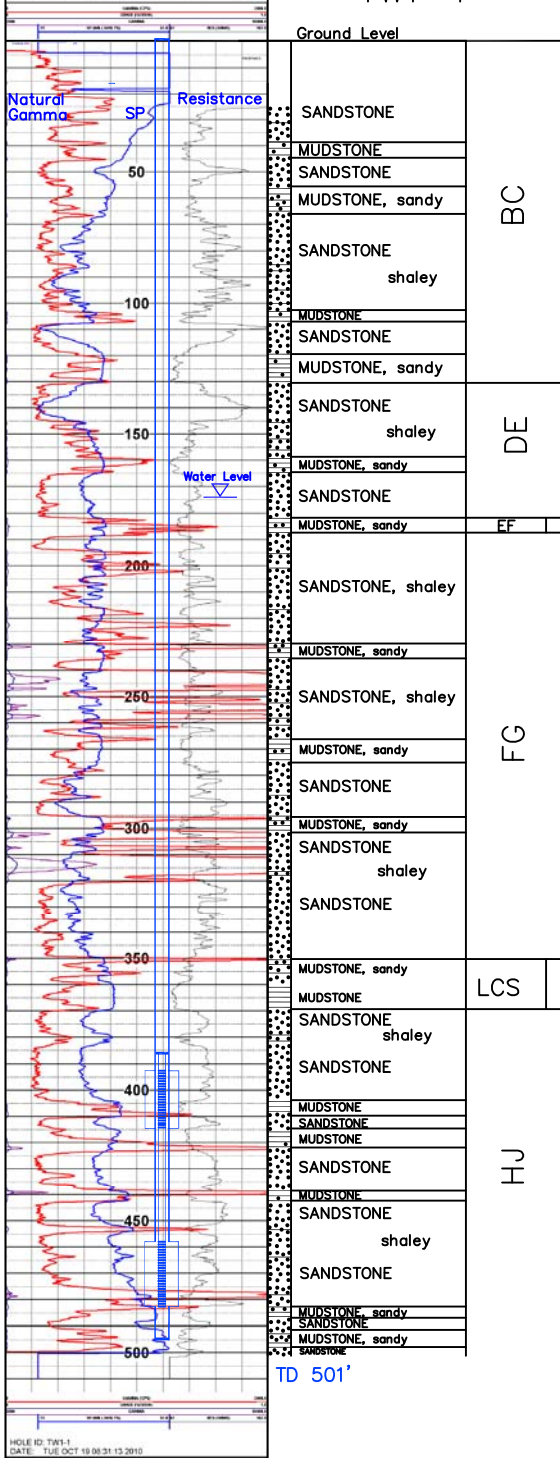


TW1-1

Lost Creek ISR, LLC
WELL COMPLETION REPORT



WELL # TW1-1 SEO # 193897 Date Drilled: 10/19/10

Location: E 2,210,480 / N 596,090 (NAD 83)

Ground Elev: 6940.0' Measure Point Elev: 6941.3'

TD: 501' Hole Dia.: 7-7/8"

CASED to: 495' Casing: PVC SDR17 ID: 4.5" OD: 5"

GROUT: Portland Cement – Type I/II
 Pumped thru casing, displaced to surface with water

COMPLETION Aquifer: MHJ, LHJ Sands

Static Water Level: Depth 167' Elev: 6773' (avg.)

UNDERREAM: Blade Dia: 10"
 Intervals: from 393' to 415' / length 22'
 from 458' to 483' / length 25'

SCREEN LINER ASSEMBLY

Description	Depth		Elev.		Length
	From	To	From	To	
K-packer	386'		6554'		
Screen	393'	415'	6547'	6525'	22'
Screen	458'	483'	9482'	6457'	25'

SCREEN SPECIFICATIONS:

Slot: 0.020" Composition 3" PVC

FILTER PACKING:

Volume: _____ (bags)(ft³) Sand Specs. _____
 Method: N/A

WELL STIMULATION: Method Airlift

Yield: Good / Moderate / Poor

HOLE ID: TW1-1
 DATE: TUE OCT 19 08:31:13 2010

TW1-1