

# UKMO-101

<b>Company</b> UKMO-RES-SP UKMO-101	
LOG PARAMETERS DATE: 05/17/07 WELL: UKMO-101 LOG TYPE: 10 INCH LOG, GAMMA-RES-SP	LOG PARAMETERS DATE: 05/17/07 WELL: UKMO-101 LOG TYPE: 10 INCH LOG, GAMMA-RES-SP

## UKMO-101

## Lost Creek ISR, LLC WELL COMPLETION REPORT

WELL # UKMO-101 SEO # 179907 Date Drilled: 5-17-07

Location: E 744,086 / N 534,943 (NAD 27)

Ground Elev: 6940.19 Measure Point Elev: 6942.28

TD: 488 ft. Hole Dia.: 7-7/8"

CASED to: 465' Casing: PVC SDR17 ID: 4.5" OD: 5"

GROUT: Portland Cement - Type I/II  
Pumped thru casing, displaced to surface with water

COMPLETION Aquifer: HJ Sand

Static Water Level: Depth 179' Elev: 6763' (avg')

UNDERREAM: Blade Dia: 10-1/2"

Intervals: from 465' to 487' / length 22'

from \_\_\_\_\_ to \_\_\_\_\_ / length \_\_\_\_\_

### SCREEN LINER ASSEMBLY

Description	Depth		Elev.		Length
	From	To	From	To	
K-packer		460'		6482'	
Screen	465'	490'	6477'	6452'	25'

### SCREEN SPECIFICATIONS:

Slot: 0.030" Composition 3" PVC

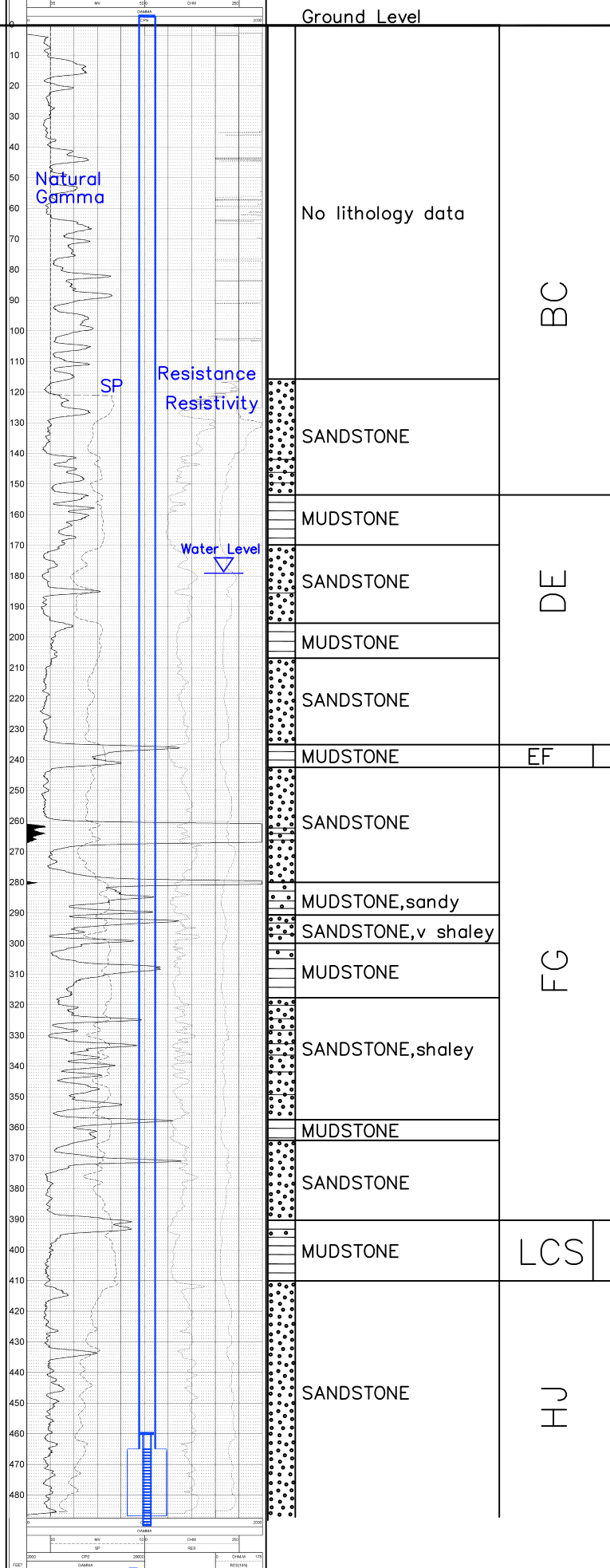
### FILTER PACKING:

Volume: \_\_\_\_\_ (bags)(ft<sup>3</sup>) Sand Specs. \_\_\_\_\_

Method: N/A

WELL STIMULATION: Method Airlift

Yield: Good / Moderate / Poor



Vertical Scale: 1"=50'