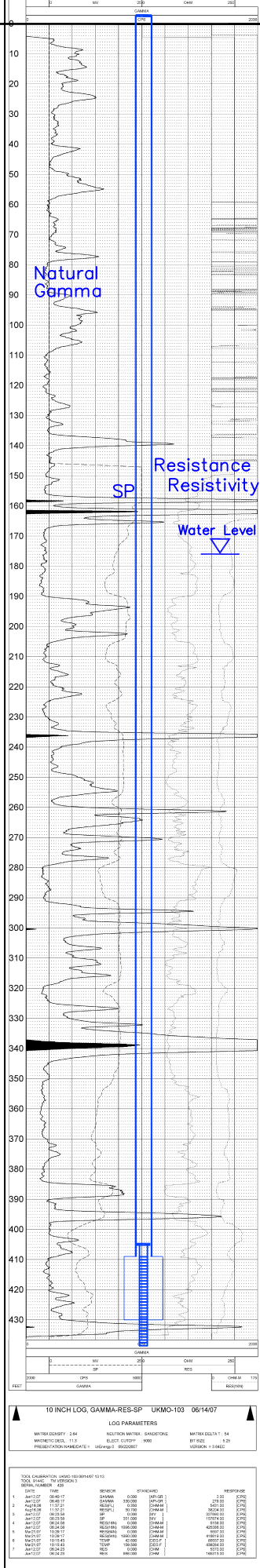


UKMO-103

GAMMA-RES-SP UKMO-103	DATE: 06/14/07 TIME: 10:00 AM

UKMO-103

10 INCH LOG, GAMMA-RES-SP UKMO-103 06/14/07			
MATRIX DENSITY: 2.64	NEUTRON-MODERATED SENSITIVITY	MATRIX SLOPE: 1.4	
MAGNETIC SUSCEPTIBILITY: 0.0001	ELECTRIC CONDUCTIVITY: 0.0001	BT RESISTIVITY: 0.0001	BT RESISTIVITY: 0.0001
FORMATION FACTOR: 1.0	FORMATION FACTOR: 1.0	FORMATION FACTOR: 1.0	FORMATION FACTOR: 1.0



0 - 160	No Lithology Data	BC
160 - 170	SANDSTONE	FG
170 - 175	MUDSTONE	
175 - 180	SANDSTONE	
180 - 190	MUDSTONE	
190 - 200	SANDSTONE	
200 - 210	SANDSTONE, shaley	
210 - 220	SANDSTONE	
220 - 230	SANDSTONE	
230 - 240	MUDSTONE, sandy	
240 - 250	SANDSTONE	
250 - 260	SANDSTONE, v. shaley	LCS
260 - 270	SANDSTONE	
270 - 280	MUDSTONE, sandy	
280 - 290	SANDSTONE, v. shaley	
290 - 300	MUDSTONE	
300 - 310	SANDSTONE	
310 - 320	MUDSTONE	
320 - 330	SANDSTONE	
330 - 340	MUDSTONE, sandy	
340 - 350	MUDSTONE	
350 - 360	SANDSTONE	HJ
360 - 370	MUDSTONE	
370 - 430	SANDSTONE	
430 - 438		SBS

Lost Creek ISR, LLC

WELL COMPLETION REPORT

WELL # UKMO-103 SEO # 179913 Date Drilled: 6-14-07

Location: E 744,501 / N 535,556 (NAD 27)

Ground Elev: 6949.28 Measure Point Elev: 6950.53

TD: 438 ft. Hole Dia.: 7-7/8"

CASED to: 409' Casing: PVC SDR17 ID: 4.5" OD: 5"

GROUT: Portland Cement - Type I/II
Pumped thru casing, displaced to surface with water

COMPLETION Aquifer: HJ Sand

Static Water Level: Depth 176' Elev: 6774' (avg.)

UNDERREAM: Blade Dia: 10-1/2"
Intervals: from 409' to 430' / length 21'
from _____ to _____ / length _____

SCREEN LINER ASSEMBLY

Description	Depth	Elev.	Length
	From - To	From - To	
K-packer	405'	6545'	
Screen	409' - 439'	6541' - 6511'	30'

SCREEN SPECIFICATIONS:

Slot: 0.030" Composition 3" PVC

FILTER PACKING:

Volume: _____ (bags)(ft³) Sand Specs. _____
Method: N/A

WELL STIMULATION: Method Airlift

Yield: Good / Moderate / Poor

Vertical Scale: 1"=50'