

# UKMP-101

## UKMP-101

### Lost Creek ISR, LLC WELL COMPLETION REPORT

WELL # UKMP-101 SEO # 179906 Date Drilled: 5-15-07

Location: E 744,090 / N 534,929 (NAD 27)

Ground Elev: 6940.18 Measure Point Elev: 6941.74

TD: 575 ft. Hole Dia.: 7-7/8"

CASED to: 547' Casing: PVC SDR17 ID: 4.5" OD: 5"

GROUT: Portland Cement - Type I/II  
Pumped thru casing, displaced to surface with water

COMPLETION Aquifer: UKM Sand

Static Water Level: Depth 199' Elev: 6742' (avg.)

UNDERREAM: Blade Dia: 10-1/2"

Intervals: from 547' to 575' /length 28'

from \_\_\_\_\_ to \_\_\_\_\_ /length \_\_\_\_\_

#### SCREEN LINER ASSEMBLY

Description	Depth		Elev.		Length
	From	To	From	To	
K-packer	545'	6396'			
Screen	547'	577'	6394'	6364'	30'

#### SCREEN SPECIFICATIONS:

Slot: 0.030" Composition 3" PVC

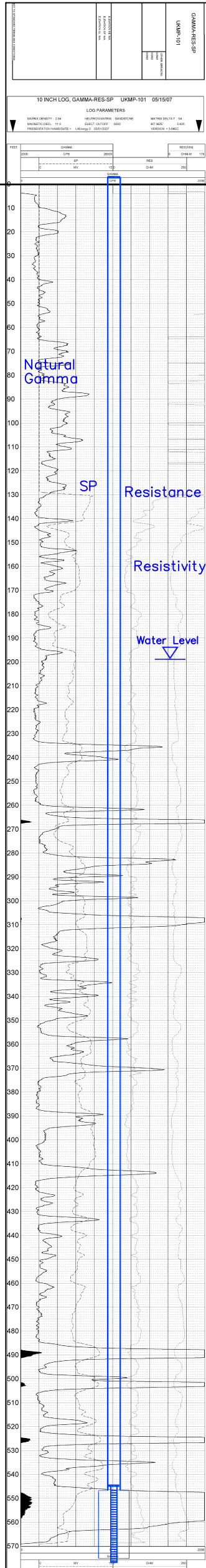
#### FILTER PACKING:

Volume: \_\_\_\_\_ (bags)(ft<sup>3</sup>) Sand Specs. \_\_\_\_\_

Method: N/A

WELL STIMULATION: Method Airlift

Yield: Good / Moderate / Poor



Section	Lithology
BC	No Lithology Data
DE	MUDSTONE
	SANDSTONE
	MUDSTONE, sandy
	SANDSTONE, clayey
FG	SANDSTONE
	MUDSTONE
	SANDSTONE, shaley
	MUDSTONE, sandy
	SANDSTONE, shaley
	MUDSTONE
	SANDSTONE
	MUDSTONE, sandy
	SANDSTONE
	MUDSTONE
LCS	MUDSTONE, sandy
	MUDSTONE
HJ	SANDSTONE
	MUDSTONE
	SANDSTONE
	MUDSTONE
	SANDSTONE
SBS	MUDSTONE, sandy
	SANDSTONE
KM	SANDSTONE

— TD 575

Vertical Scale: 1"=50'