

# UKMP-102

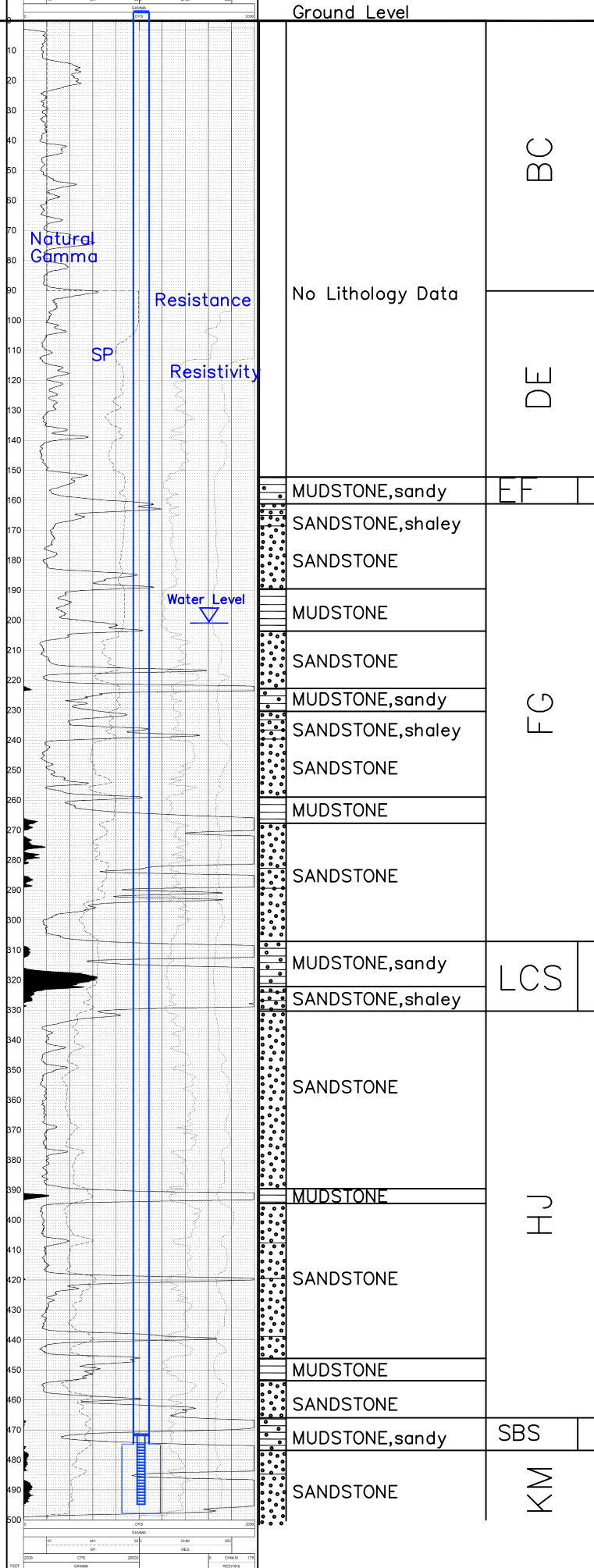
## Lost Creek ISR, LLC WELL COMPLETION REPORT

10 INCH LOG, GAMMA-RES-SP UKMP-102 05/18/07

LOG PARAMETERS

WATER DEPTH: 2.0'     RESISTIVITY: SANDSTONE     WATER DEPTH: 2.0'  
 MUDSTONE: 11.0'     RESISTIVITY: SANDSTONE     MUDSTONE: 11.0'  
 MUDSTONE: 11.0'     RESISTIVITY: SANDSTONE     MUDSTONE: 11.0'

UKMP-102



WELL # UKMP-102 SEO # 179909 Date Drilled: 5-18-07

Location: E 744,204 / N 535,145 (NAD 27)

Ground Elev: 6940.51 Measure Point Elev: 6942.10'

TD: 498' Hole Dia.: 7-7/8"

CASED to: 475' Casing: PVC SDR17 ID: 4.5" OD: 5"

GROUT: Portland Cement - Type I/II  
Pumped thru casing, displaced to surface with water

COMPLETION Aquifer: UKM Sand

Static Water Level: Depth 201' Elev: 6741' (Avg)

UNDERREAM: Blade Dia: 10.5"  
Intervals: from 485' to 505' / length 20'  
from \_\_\_\_\_ to \_\_\_\_\_ / length \_\_\_\_\_

### SCREEN LINER ASSEMBLY

Description	Depth		Elev.		Length
	From - To	/ From - To	From - To	/ From - To	
K-packer	472'		6470'		
Screen	475'	495'	6467'	6447'	20'

### SCREEN SPECIFICATIONS:

Slot: 0.030" Composition 3" PVC

### FILTER PACKING:

Volume: \_\_\_\_\_ (bags)(ft<sup>3</sup>) Sand Specs. \_\_\_\_\_  
Method: N/A

WELL STIMULATION: Method Airlift

Yield: Good / Moderate / Poor

Vertical Scale: 1"=50'