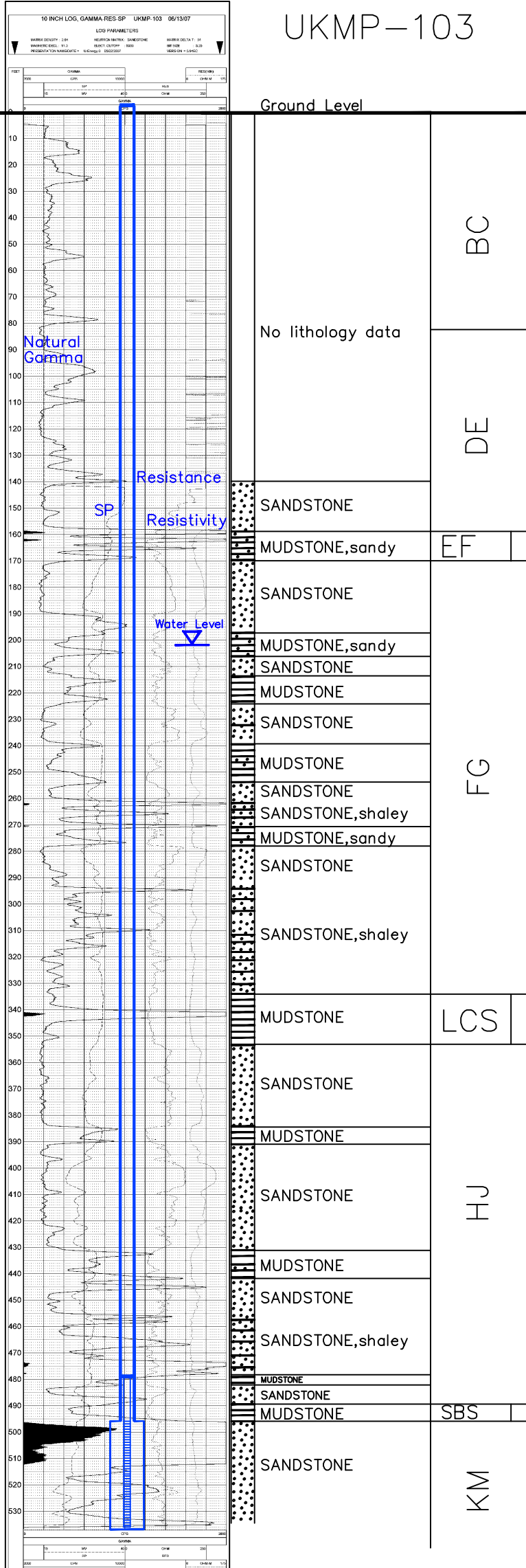


UKMP-103

Lost Creek ISR, LLC WELL COMPLETION REPORT



WELL # UKMP-103 SEO # 179912 Date Drilled: 6-13-07

Location: E 744,487 / N 535,558 (NAD 27)

Ground Elev: 6949.73 Measure Point Elev: 6950.84

TD: 537 ft. Hole Dia.: 7-7/8"

CASED to: 496' Casing: PVC SDR17 ID: 4.5" OD: 5"

GROUT: Portland Cement - Type I/II
Pumped thru casing, displaced to surface with water

COMPLETION Aquifer: UKM Sand

Static Water Level: Depth 274' Elev: 6676' (avg.)

UNDERREAM: Blade Dia: 10-1/2"

Intervals: from 496' to 537' / length 41'
from _____ to _____ / length _____

SCREEN LINER ASSEMBLY

Description	Depth		Elev.		Length
	From	To	From	To	
K-packer	484'		6466'		
Screen	496'	536'	6454'	6414'	40'

SCREEN SPECIFICATIONS:

Slot: 0.020" Composition 3" PVC

FILTER PACKING:

Volume: _____ (bags)(ft³) Sand Specs. _____
Method: N/A

WELL STIMULATION: Method Airlift

Yield: Good / Moderate / Poor

Vertical Scale: 1"=50'