

Lost Creek ISR, LLC  
**WELL COMPLETION REPORT**

**UKMU-101  
(MO-114)**

WELL # UKMU-101 SEO # 179905 Date Drilled: 5-10-07

Location: E 744,101 / N 534,931 (NAD 27)

Ground Elev: 6939.87 Measure Point Elev: 6941.87

TD: 850 ft. Hole Dia.: 7-7/8"

CASED to: 608' Casing: PVC SDR17 ID: 4.5" OD: 5"

GROUT: Portland Cement - Type I/II  
Pumped thru casing, displaced to surface with water

COMPLETION Aquifer: MKM Sand

Static Water Level: Depth 198' Elev: 6743' (avg.)

UNDERREAM: Blade Dia: 10-1/2"

Intervals: from 608' to 630' /length 22'  
from \_\_\_\_\_ to \_\_\_\_\_ /length \_\_\_\_\_

**SCREEN LINER ASSEMBLY**

Description	Depth		Elev.		Length
	From - To	/ From - To	From - To		
K-packer	592'		6350'		
Screen	608' - 628'		6334' - 6314'		20'

**SCREEN SPECIFICATIONS:**

Slot: 0.030" Composition 3" PVC

**FILTER PACKING:**

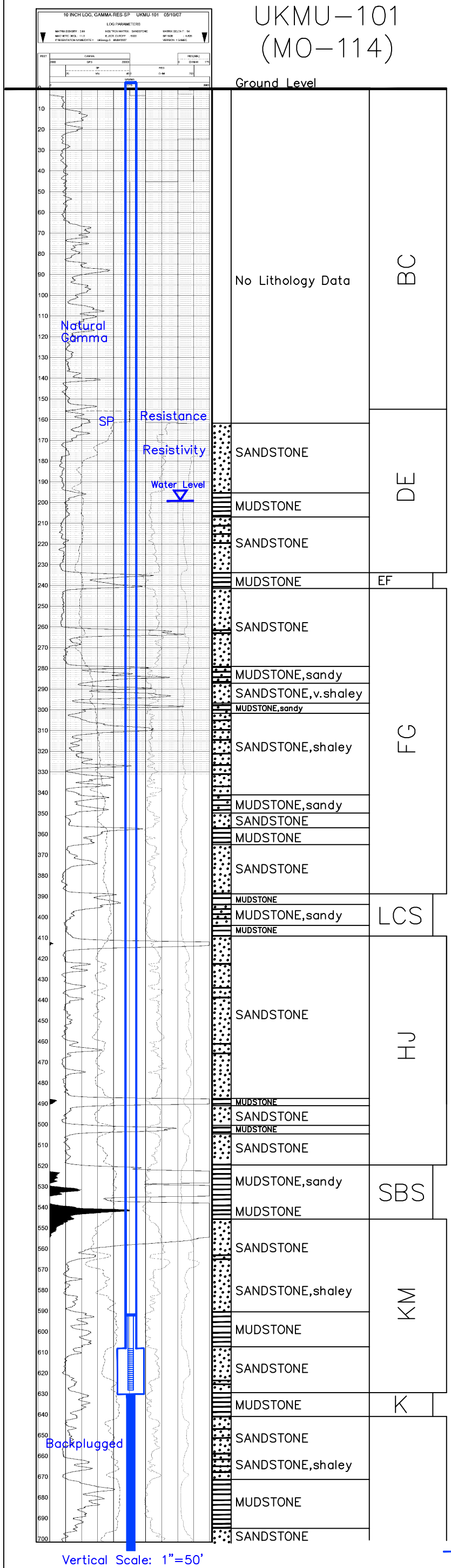
Volume: \_\_\_\_\_ (bags)(ft<sup>3</sup>) Sand Specs. \_\_\_\_\_  
Method: N/A

**WELL STIMULATION: Method Airlift**

Yield: Good / Moderate / Poor

Pilot Hole BACKPLUGGED: 630'-850'  
w/ BH Ultragrout slurry - 25% solids

(Note: UKMU-101 recompleted 11-3-08 to monitor LFG)  
Renamed as MO-114  
See Completion Log for MO-114



Vertical Scale: 1"=50'

— TD 850

UKMU-101  
(MO-114)