

UKMU-102
(MO-115)

Lost Creek ISR, LLC
WELL COMPLETION REPORT

UKMU-102
(MO-115)

WELL # UKMU-102 SEO # 179908 Date Drilled: 5-11-07

Location: E 744,191 / N 535,143 (NAD 27)

Ground Elev: 6941.62' Measure Point Elev: 6942.62'

TD: 583' Hole Dia.: 7-7/8"

CASED to: 543' Casing: PVC SDR17 ID: 4.5" OD: 5"

GROUT: Portland Cement - Type I/II
Pumped thru casing, displaced to surface with water

COMPLETION Aquifer: MKM Sand

Static Water Level: Depth 201' Elev: 6742' (avg.)

UNDERREAM: Blade Dia: 10.5"

Intervals: from 545' to 570' / length 25'
from _____ to _____ / length _____

SCREEN LINER ASSEMBLY

Description	Depth		Elev.		Length
	From - To	/ From - To	From - To		
K-packer	527'		6416'		
Screen	543' - 583'		6400' - 6360'		40'

SCREEN SPECIFICATIONS:

Slot: 0.030" Composition 3" PVC

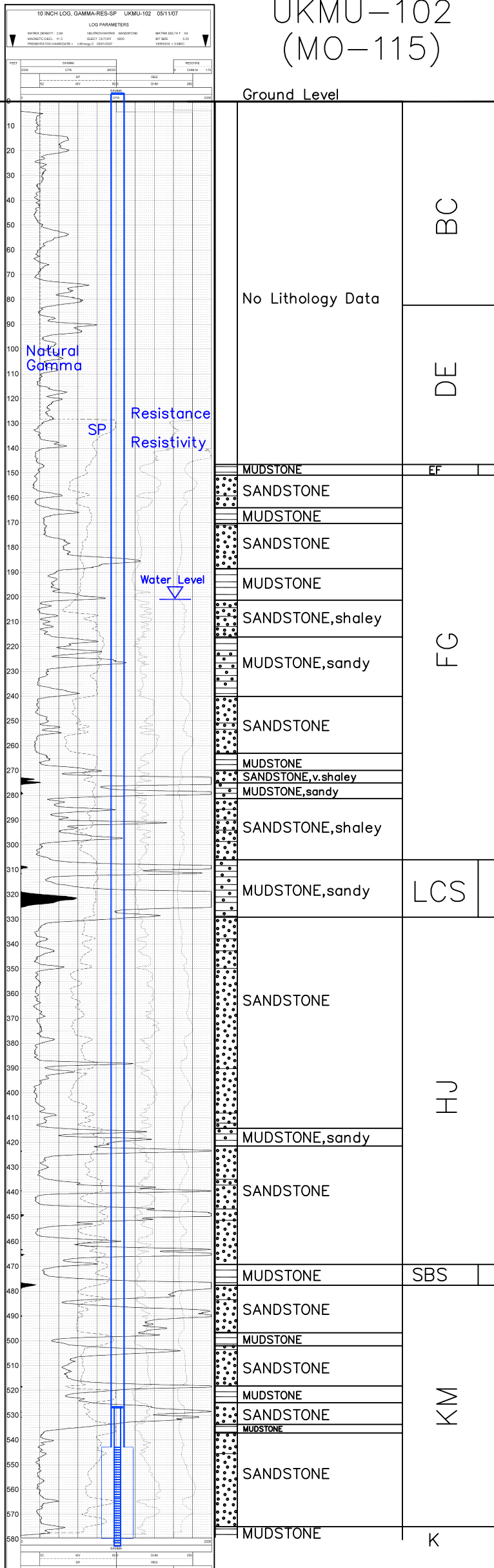
FILTER PACKING:

Volume: _____ (bags)(ft³) Sand Specs. _____
Method: N/A

WELL STIMULATION: Method Airlift

Yield: Good / Moderate / Poor

(Note: UKMU-102 recompleted 11-3-08 to monitor LFG)
Renamed as MO-115
See Completion Log for MO-115



Vertical Scale: 1"=50'

UKMU-102
(MO-115)