

Geophysical Log

WELL # UKMU-103
 DATE 05/30/07
 LOG # 053007

LOG PARAMETERS
 LOG TYPE: 10 INCH LOG, GAMMA-RES-SP
 LOG SCALE: 1"=50'

UKMU-103

Lost Creek ISR, LLC
WELL COMPLETION REPORT

WELL # UKMU-103 SEO # 179911 Date Drilled: 5-30-07

Location: E 744,488 / N 535,546 (NAD 27)

Ground Elev: 6848.75 Measure Point Elev: 6950.92

TD: 850 ft. Hole Dia.: 7-7/8"

CASED to: 558' Casing: PVC SDR17 ID: 4.5" OD: 5"

GROUT: Portland Cement – Type I/II
 Pumped thru casing, displaced to surface with water

COMPLETION Aquifer: MKM Sand

Static Water Level: Depth 209' Elev: 6444' (avg.)

UNDERREAM: Blade Dia: 10-1/2"

Intervals: from 558' to 590' /length 32'
 from _____ to _____ /length _____

SCREEN LINER ASSEMBLY

Description	Depth	Elev.	Length
	From – To	/ From – To	
K-packer	546'	6404'	
Screen	558' – 588'	6392' – 6362'	30'

SCREEN SPECIFICATIONS:

Slot: 0.020" Composition 3" PVC

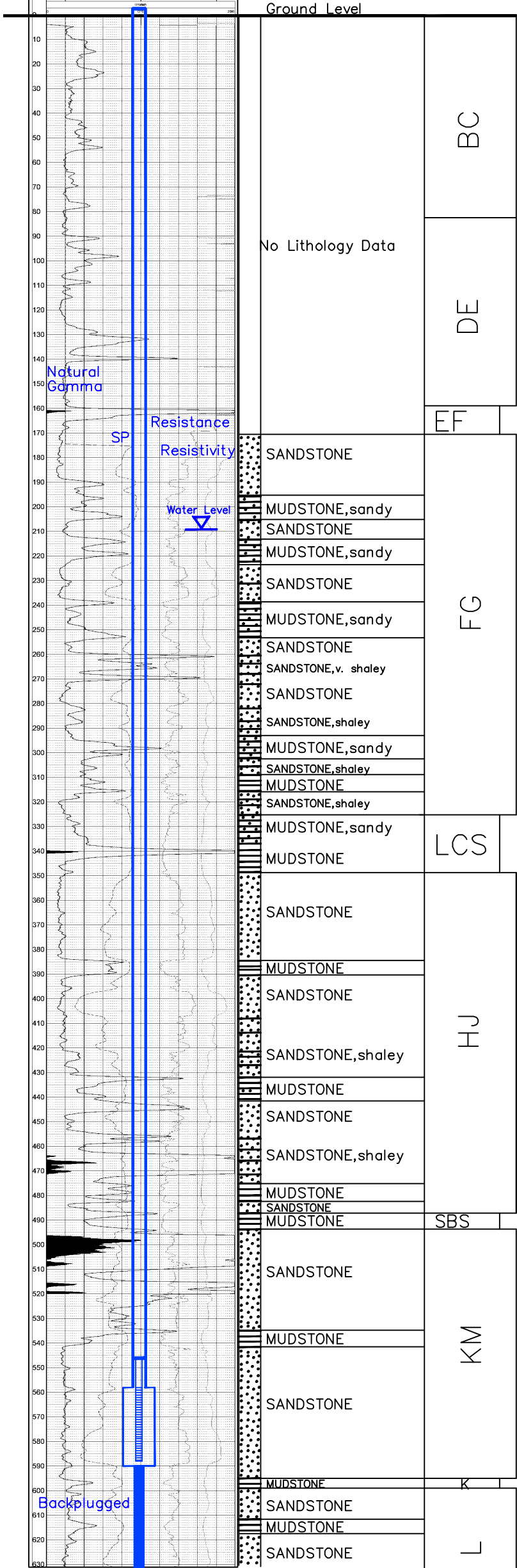
FILTER PACKING:

Volume: _____ (bags)(ft³) Sand Specs. _____
 Method: N/A

WELL STIMULATION: Method Airlift

Yield: Good / Moderate / Poor

Pilot Hole BACKPLUGGED: 590'–850'
 w/ BH Ultragrout slurry – 25% solids



Vertical Scale: 1"=50' ——— TD 850