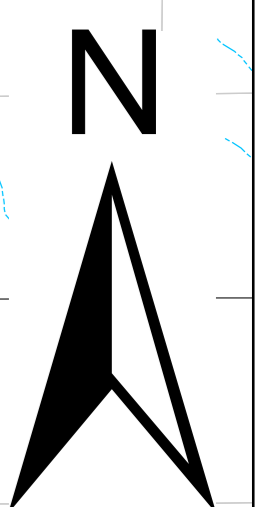
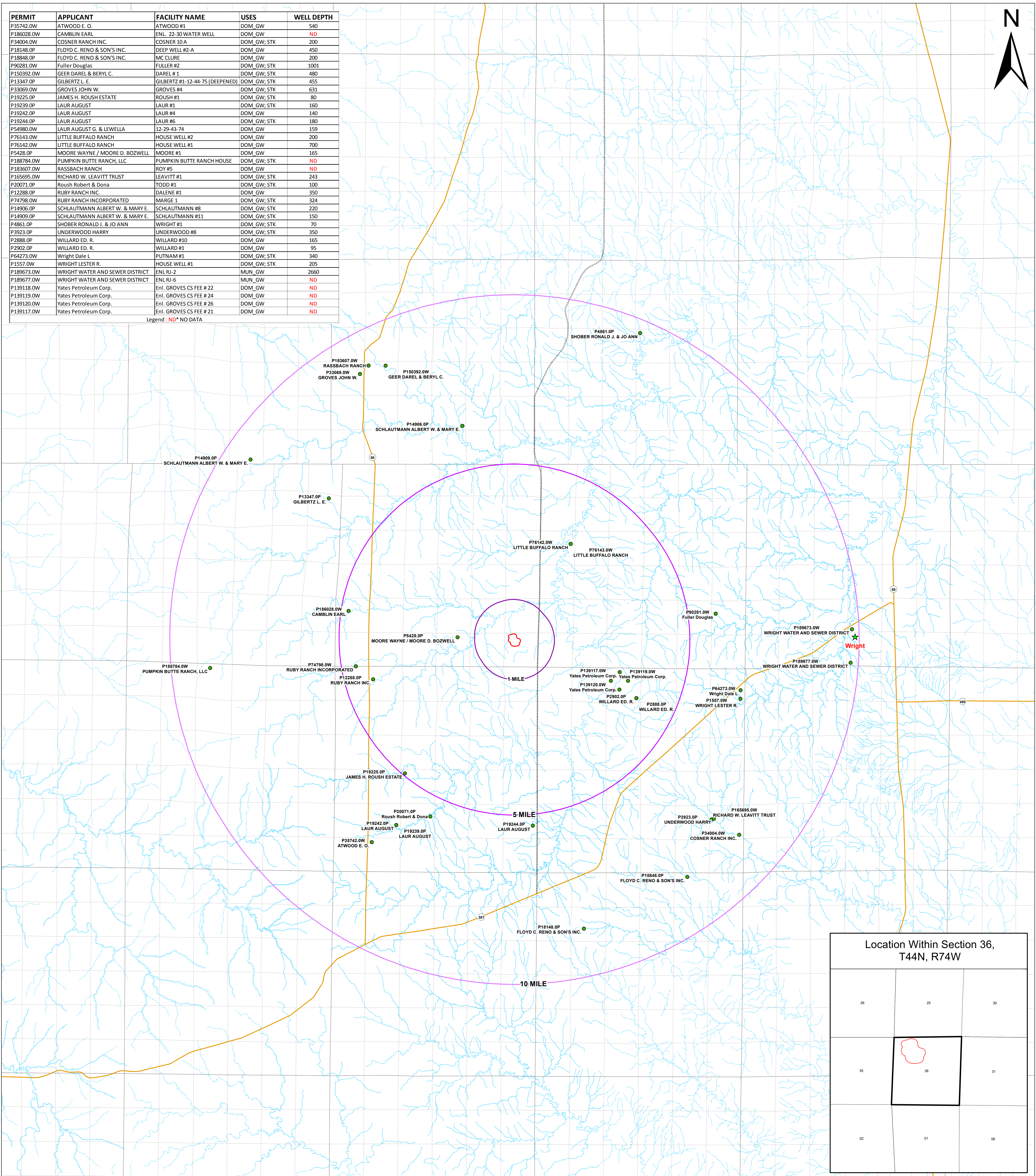


PERMIT	APPLICANT	FACILITY NAME	USES	WELL DEPTH
P35742.0W	ATWOOD E. O.	ATWOOD #1	DOM GW	540
P186028.0W	CAMBLIN EARL	ENL. 22-30 WATER WELL	DOM GW	ND
P34004.0W	COSNER RANCH INC.	COSNER 10A	DOM GW; STK	200
P18148.0P	FLOYD C. RENO & SON'S INC.	DEEP WELL #2-A	DOM GW	450
P18848.0P	FLOYD C. RENO & SON'S INC.	MC CLURE	DOM GW	200
P90281.0W	Fuller Douglas	FULLER #2	DOM GW; STK	1001
P150392.0W	GEER DAREL & BERYL C.	DAREL # 1	DOM GW; STK	480
P13347.0P	GILBERTZ L. E.	GILBERTZ #1-12-44-75 (DEEPENED)	DOM GW; STK	455
P33069.0W	GROVES JOHN W.	GROVES #4	DOM GW; STK	631
P19225.0P	JAMES H. ROUSH ESTATE	ROUSH #1	DOM GW; STK	80
P19239.0P	LAUR AUGUST	LAUR #1	DOM GW; STK	160
P19242.0P	LAUR AUGUST	LAUR #4	DOM GW	140
P19244.0P	LAUR AUGUST	LAUR #6	DOM GW; STK	180
P54980.0W	LAUR AUGUST G. & LEWELLA	12-29-43-74	DOM GW	159
P76143.0W	LITTLE BUFFALO RANCH	HOUSE WELL #2	DOM GW	200
P76142.0W	LITTLE BUFFALO RANCH	HOUSE WELL #1	DOM GW	700
P5428.0P	MOORE WAYNE / MOORE D. BOZWELL	MOORE #1	DOM GW	165
P188784.0W	PUMPKIN BUTTE RANCH, LLC	PUMPKIN BUTTE RANCH HOUSE	DOM GW; STK	ND
P183607.0W	RASSBACH RANCH	ROY #5	DOM GW	ND
P165695.0W	RICHARD W. LEAVITT TRUST	LEAVITT #1	DOM GW; STK	243
P20071.0P	Roush Robert & Dona	TODD #1	DOM GW; STK	100
P12288.0P	RUBY RANCH INC.	DALENE #1	DOM GW	350
P74798.0W	RUBY RANCH INCORPORATED	MARGE 1	DOM GW; STK	324
P14906.0P	SCHLAUTMANN ALBERT W. & MARY E.	SCHLAUTMANN #8	DOM GW; STK	220
P14909.0P	SCHLAUTMANN ALBERT W. & MARY E.	SCHLAUTMANN #11	DOM GW; STK	150
P4861.0P	SHOBER RONALD J. & JO ANN	WRIGHT #1	DOM GW; STK	70
P3923.0P	UNDERWOOD HARRY	UNDERWOOD #8	DOM GW; STK	350
P2888.0P	WILLARD ED. R.	WILLARD #10	DOM GW	165
P2902.0P	WILLARD ED. R.	WILLARD #1	DOM GW	95
P64273.0W	Wright Dale L	PUTNAM #1	DOM GW; STK	340
P1557.0W	WRIGHT LESTER R.	HOUSE WELL #1	DOM GW; STK	205
P189673.0W	WRIGHT WATER AND SEWER DISTRICT	ENL RJ-2	MUN GW	2660
P189677.0W	WRIGHT WATER AND SEWER DISTRICT	ENL RJ-6	MUN GW	ND
P139118.0W	Yates Petroleum Corp.	Enl. GROVES CS FEE # 22	DOM GW	ND
P139119.0W	Yates Petroleum Corp.	Enl. GROVES CS FEE # 24	DOM GW	ND
P139120.0W	Yates Petroleum Corp.	Enl. GROVES CS FEE # 26	DOM GW	ND
P139117.0W	Yates Petroleum Corp.	Enl. GROVES CS FEE # 21	DOM GW	ND

Legend: ND\* NO DATA



Legend	
	Aquifer Exemption Boundary
	Ground water Use Well
	Cities
	Stream
	Roads
	Clarkelen RD (County RD 22)
	1 Mile Buffer
	5 Mile Buffer
	10 Mile Buffer

## Permitted Wells Listed as Domestic or Municipal use within 10 Miles of the Proposed Linc Energy Aquifer Exemption Area

Campbell County, Wyoming

Coordinate System: NAD 1983 UTM Zone 13N

Path: X:\UCG\_Data\364474\Source Aquifers For Groundwater users Within AQ.mxd

0 10,000 20,000 Feet

1 inch = 5,000 feet

Date: 30 OCT 2013

Drawn By: N.K