

FEB 08 2010

Jim Ruby, Executive Secretary
Environmental Quality Council

SNProJ2009\029-01 (Sublette County Landfill)\GROUNDWATERWELLS10-23-09.DWG (GW RADIENT) - Oct 23 2009 02:602 pm PLOTTED BY: karfchner

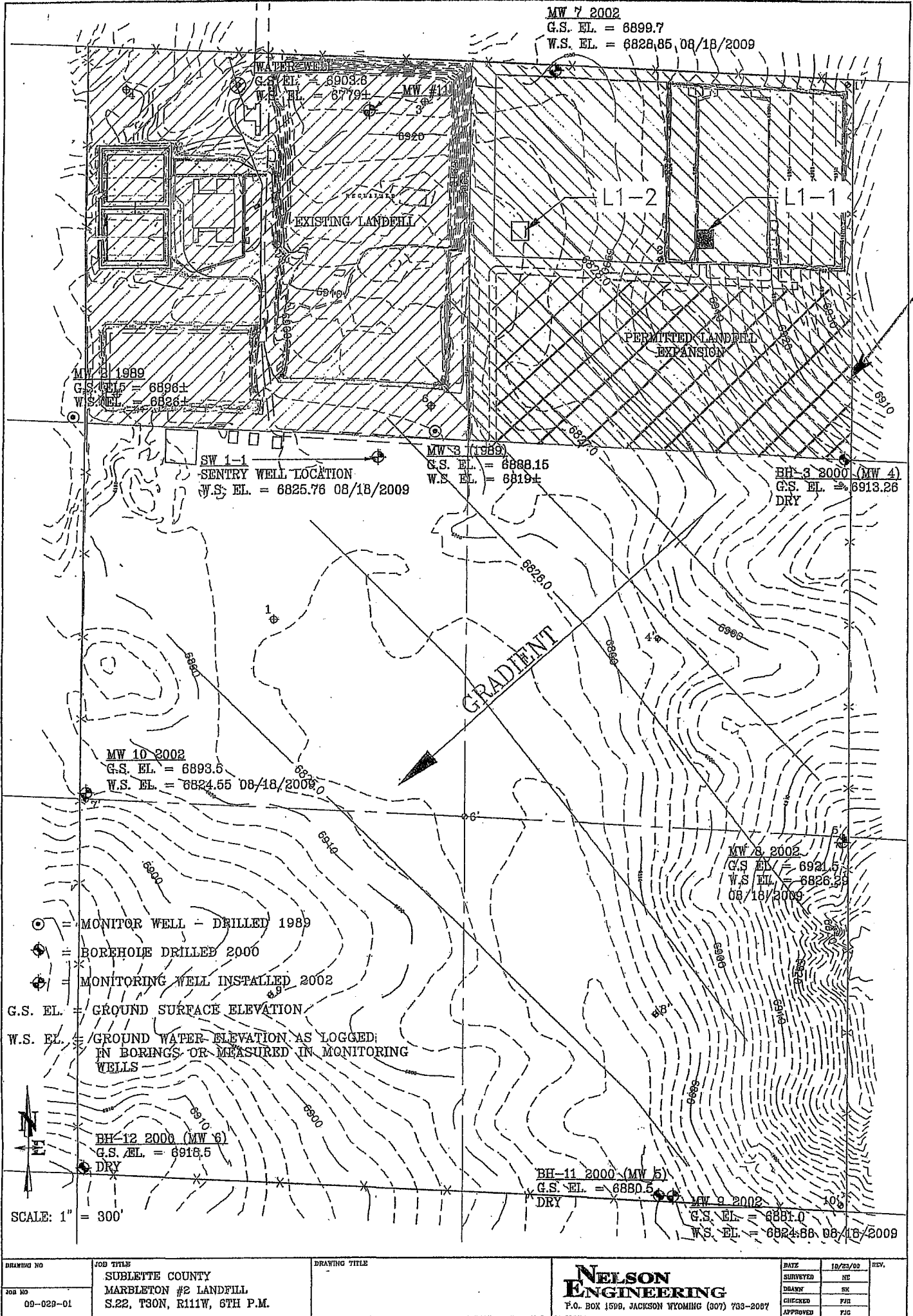


EXHIBIT 1